

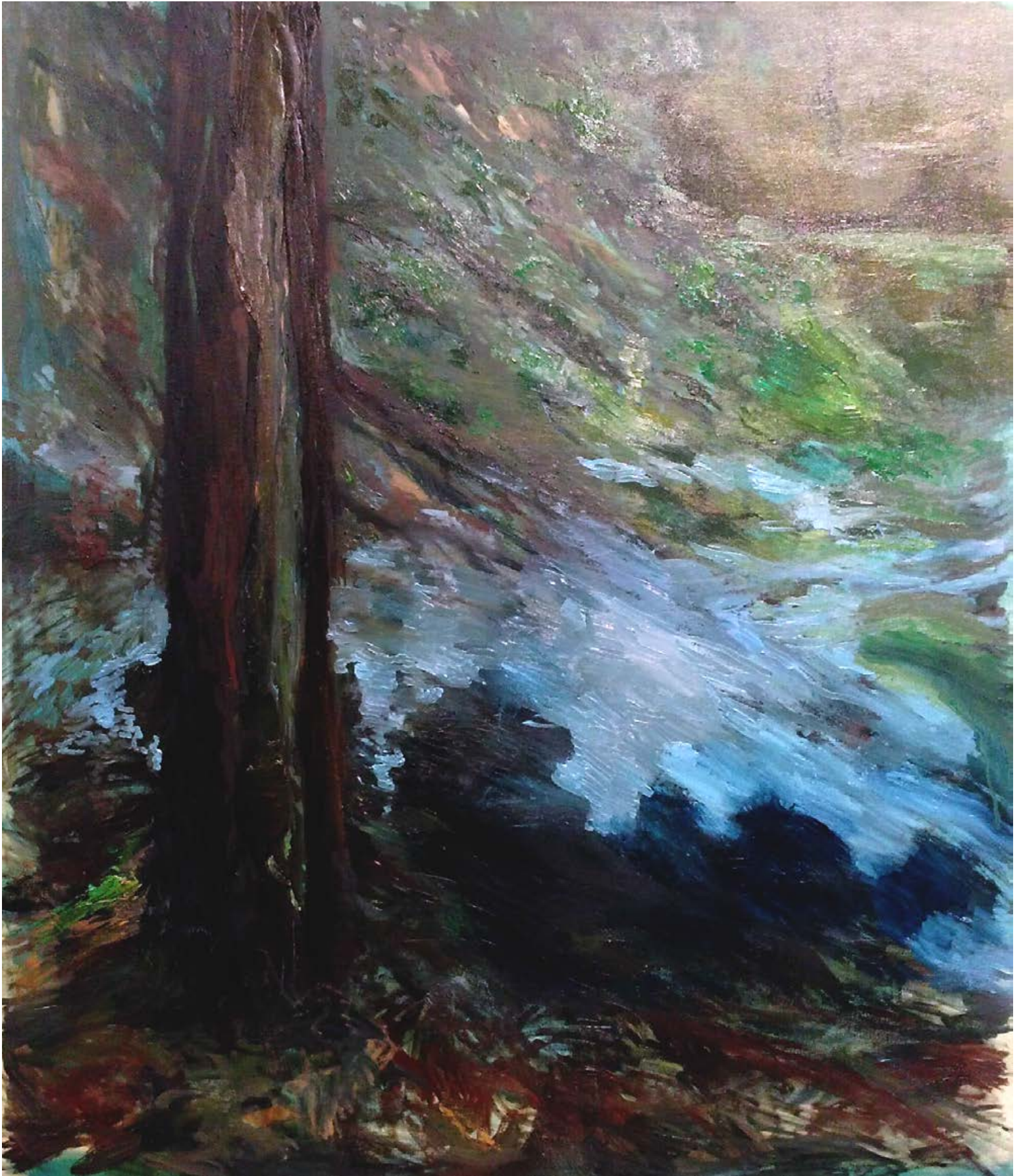
Student Artwork Portfolio



Katerina Lanfranco



Painting Class: Landscape painting, atmospheric perspective, limited color palette. Oil on canvas, 40 x 40"



Painting Class: Landscape painting, Alla Prima, from direct observational drawings. Oil on canvas, 40 x 34"



Painting Class: Landscape painting, Alla Prima, optical mixing. Acrylic on Canvas, 36 x 48"



Painting Class: Landscape painting, monochromatic color. Acrylic on canvas 40 x 40"



Painting Class: Abstraction, analytical Cubism, using organic forms and a limited palette. Acrylic on canvas, 60 x 60"



Painting Class: Abstraction, limited palette. Acrylic on canvas, 48 x 36"



Painting Class: Self-portrait, limited color palette. Oil on canvas, 48 x 20"



Painting Class: Self-portrait, limited color palette. Oil on canvas, 48 x 20"



Painting Class: Narrative painting, limited color palette. Acrylic on canvas, 28 x 40"



Painting Class: Narrative painting, warm-cool color palette. Acrylic paint on canvas, 36 x 22"



Drawing Class: Final project, symbolic self-portrait (combining collage, narrative, and art historical reference).
Mixed media on paper, 18 x 24"



Painting Class: Collage study. Acrylic paint, acrylic medium, acetate, and plastic on canvas, 12 x 12"



Drawing Class: Landscape drawing from observation, atmospheric perspective study. Charcoal on paper, 24 x 18"



Drawing Class: Landscape drawing, observational drawing from life, on-site at Central Park, NYC. Graphite and charcoal on paper, 18 x 24"



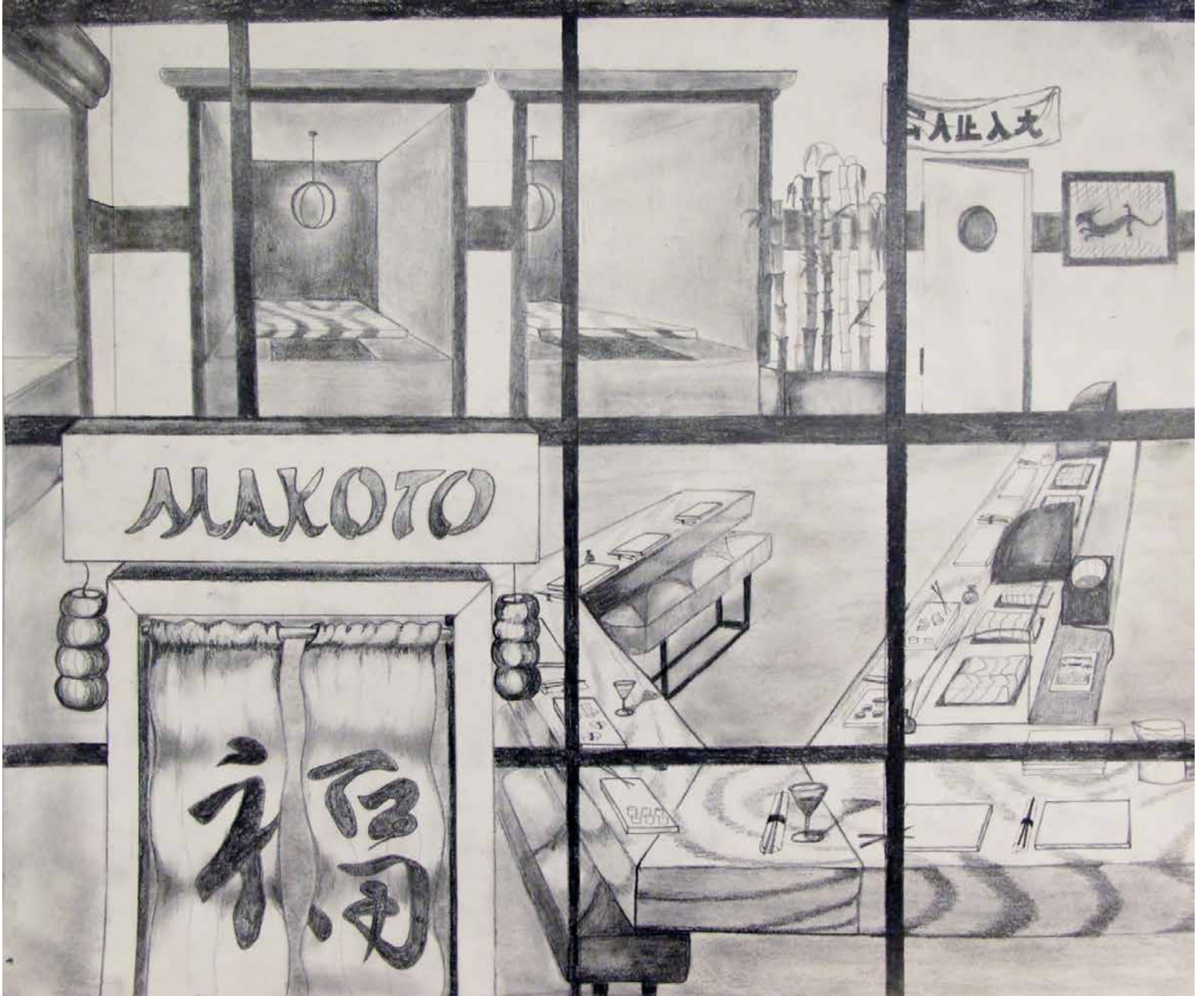
Drawing Class: Ink wash drawing and organic gesture exercise. Ink on paper, 24 x 18"



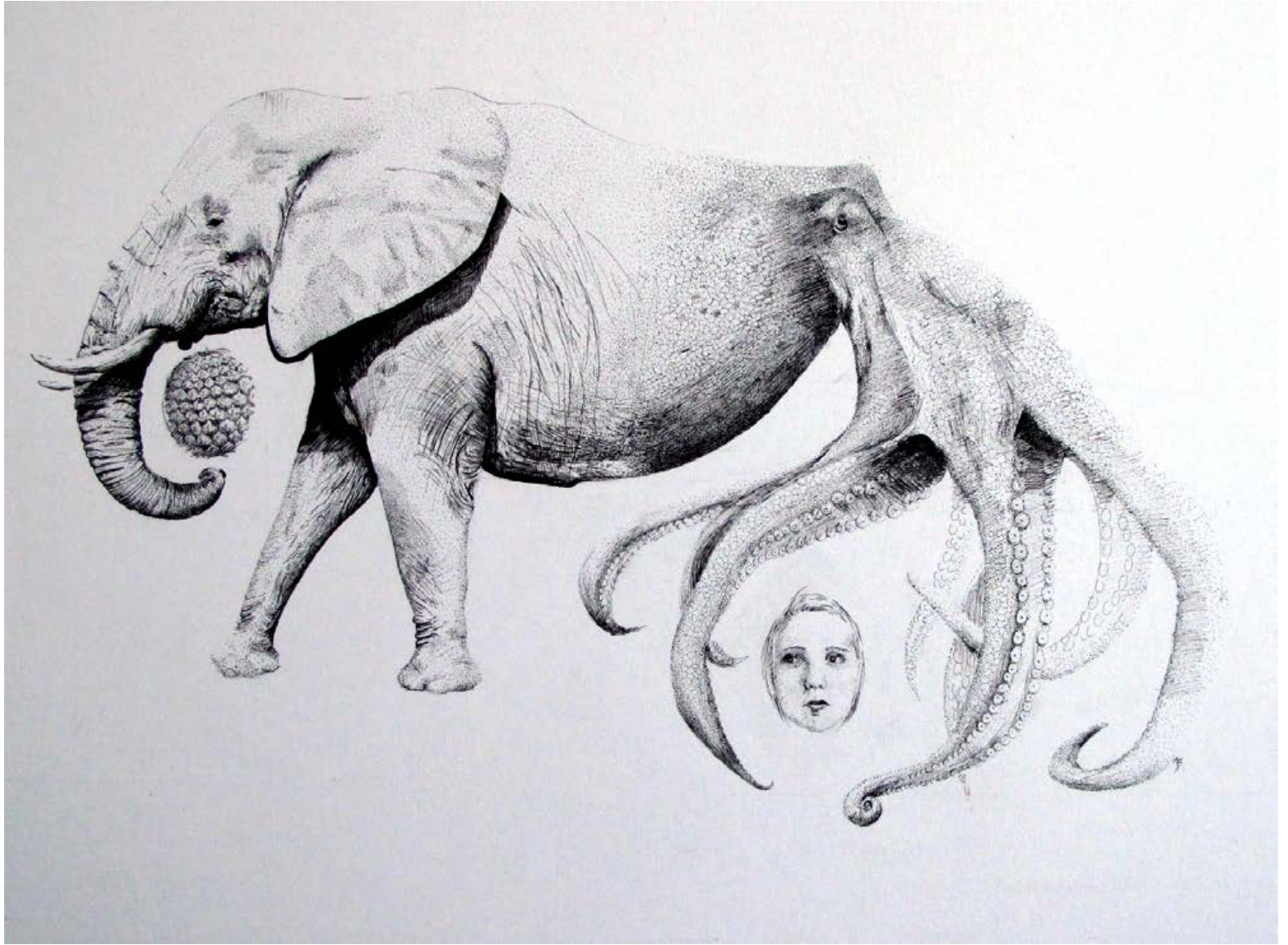
Drawing Class: Observational drawing – Metropolitan Museum of Art, NYC. Graphite on paper, 24 x 18"



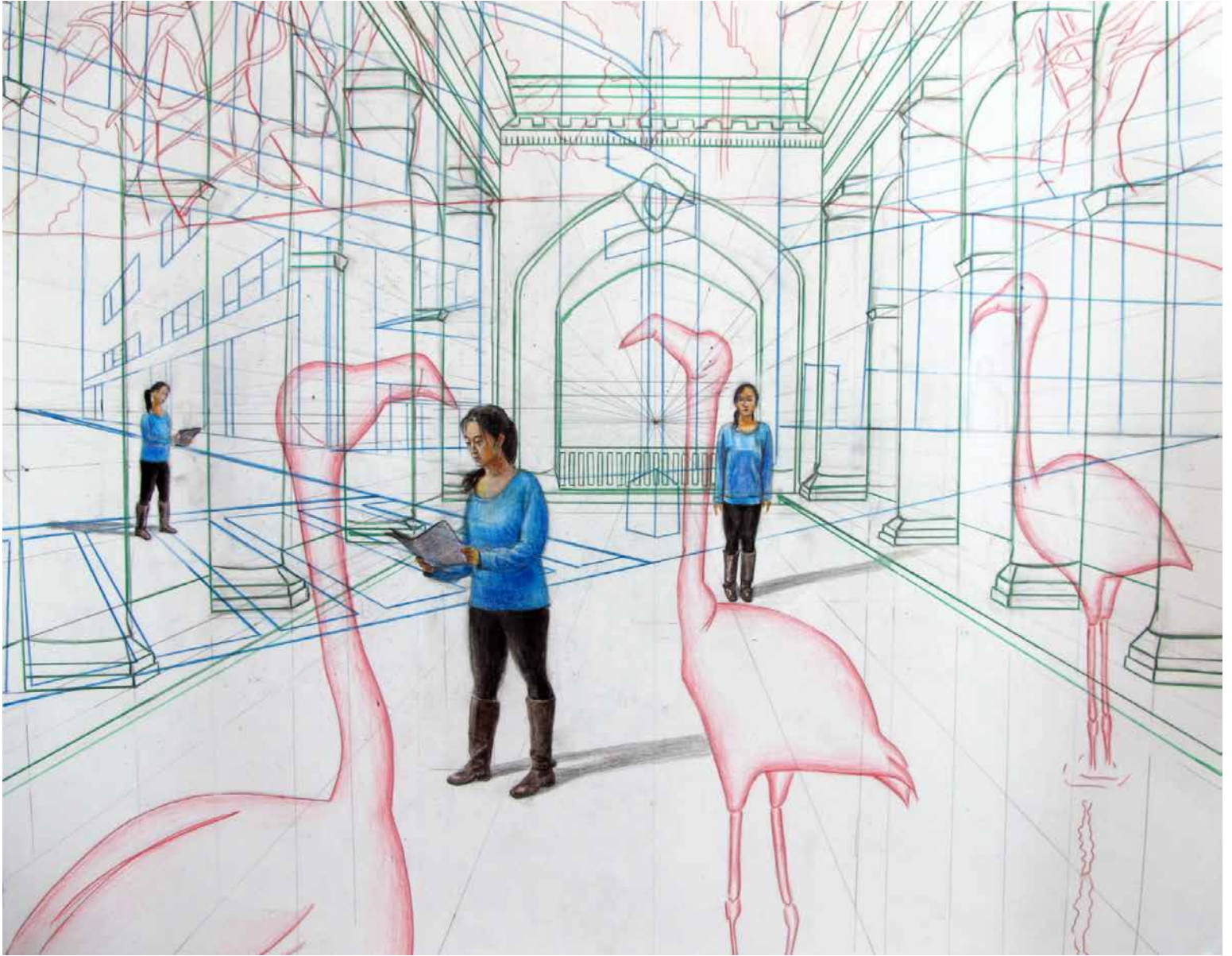
Drawing Class: Still-life drawing, in-class exercise. Charcoal on paper, 24 x 18"



Drawing Design Studio Class: Linear perspective (mixed perspective). Graphite on paper, 14 x 17"



Drawing Class: Final project, symbolic self-portrait (combining portraiture and stippling). Ink on paper, 18 x 24"



Drawing Class: Final project, symbolic self-portrait (combining linear perspective and figure drawing). Graphite and colored pencil on paper, 18 x 24"